

POWER AND AUTHORITY

Look at the portraits around you. They have all been carefully designed to display power and authority in impressive ways. **How do they make you feel?**

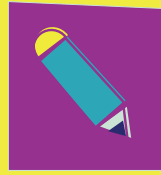


This is a painting, or portrait, of Sultan Selim III. It shows him wearing royal clothes and a turban. He is holding a diamond watch. Below the sultan is a scene with his ships and boats setting sail. This painting was made to share with other kings and queens in Europe. When they saw it, they would understand that Selim was a rich and powerful king who ruled over a large country.



Portrait of Sultan Selim III
Turkey, Istanbul, ca. 1805
Opaque watercolour and gold on paper
54.1 x 40.5 cm
Aga Khan Museum, AKM220
© The Aga Khan Museum

ACTIVITY:



HOW DO YOU SEE POWER?

Look closely at the painting. What do you notice?

What clothing, symbols, or surroundings can you see? What makes Selim look powerful?

What do you think other kings and queens would have thought of the person in this portrait?

Now, draw a picture to show **YOUR** power.

Think about these questions before developing your portrait.

What makes **YOU** powerful and confident?

Which of your unique powers do you want people to see in your picture?

Which things help you show your power?

